

# OKI

## M-64s

- LCIS Model -



**3**  
years  
warranty  
Including  
Printheads

### *The fastest Eco solvent Printer in Its Class*

**WX Eco Solvent Ink**  
Low Odor,  
High Density &  
Outdoor  
Durability

**Unrivalled  
Color Gamut**  
6 Colors  
(CMYK, L<sub>c</sub>, L<sub>m</sub>)

**Super  
Precision &  
Detail**  
Print Resolution  
up to 900 dpi

**Dynamic Dot  
Printing Technology  
(DDP)**

Optimizes dot size to  
produce rich,  
bold and glossy  
colors with fine  
details

**Media  
Compatibility**  
Any roll based  
media (Adhesive Vinyl,  
Banners, PVC, etc.)  
up to 64 inches is  
suitable

**Speed**  
49.7 M<sup>2</sup>/Hour

**Advanced  
CP Manager  
Software**

**New Air  
Flow and  
Large Heater**  
Enables faster  
ink drying

**Smart Nozzle  
Mapping (SNM2)**  
Compensates for  
clogged nozzles,  
reduces downtime  
and boosts  
productivity

**On-Carriage  
Ionizer**  
Neutralizes static  
electricity and  
eliminates static  
related print  
issues

**Automatic  
Print  
Adjustment**

**Smart Pass  
Technology (SP4)**  
This 4<sup>th</sup> generation  
technology eliminates  
pass-to-pass banding  
produces smooth  
skin tones  
and image quality

# High Density Eco Solvent Inks

Revolutionizing the low-odor eco solvent inkjet printers.  
High-speed print engine plus low-odor  
WX ink achieve unmatched performance.

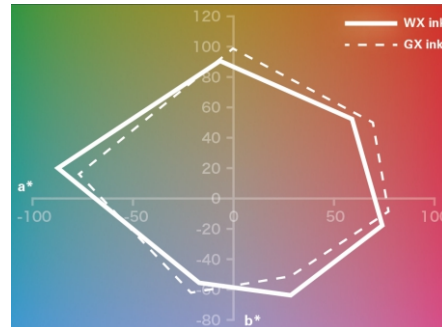


## High Performance

### Low-Odor and Eco Solvent WX Ink

The newly-developed eco solvent WX inks offer a wide color gamut, high vividness, high density, excellent outdoor durability and low running costs in addition to the low level of odor. Overall performance of WX inks meets the customers demand for higher productivity and better workplace environment.

### Wide Color Gamut

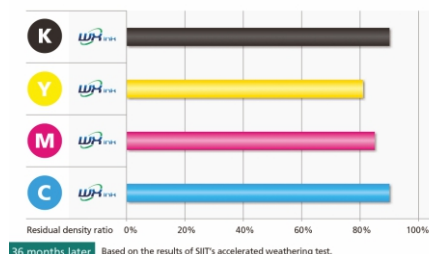


WX inks deliver vivid and rich colors with the same wide color gamut as GX inks.

# M-64s

- LCIS Model -

### High Outdoor Durability



Even with its low odor characteristic, WX inks boast excellent outdoor durability. \* SIIT does not guarantee outdoor durability.

### High Density



Enlarged image of high density area

The WX inks achieve high-density colors and details in dark areas. The M-64s meets customers' needs for sharp, clear and bright backlit signs.



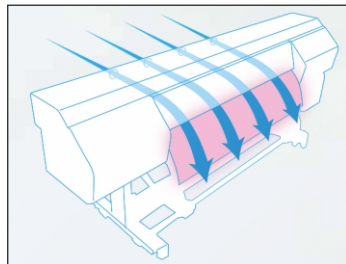
## High Print Quality

### NEW Large Capacity Ink System (LCIS)



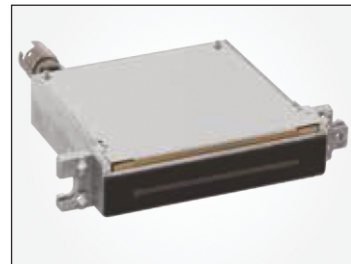
Designed to maximize your print productivity, the ColorPainter M-64s LCIS model comes with 4.5-liter large-capacity ink reservoir per color to support continuous high-volume printing. The M-64s automatically detects the remaining ink level and notifies you with a warning message and sound when the ink level is low. Ink reservoir can be refilled by replacing ink bottles without interrupting print jobs.

### NEW New Air Flow and Large Heater



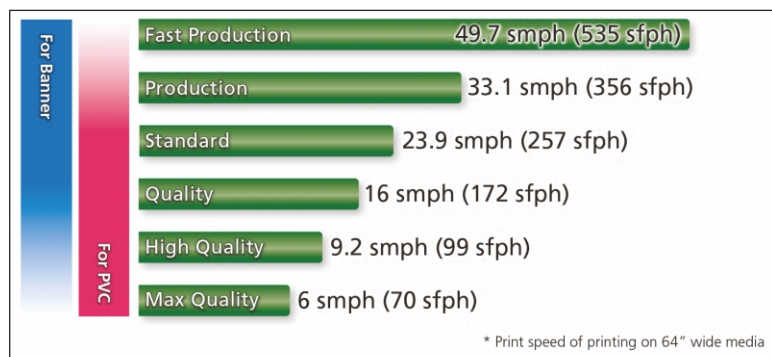
The air flow inside the printer has been redesigned for faster ink drying. The air flow system brings air from the rear of the printer and then blows it along the front cover out of the printer. This air flow coupled with a large heater makes it possible to quickly dry even low odor inks.

### NEW High-Speed and Reliable Print Heads



The ColorPainter M-64s features the new print heads that realize a maximum print speed of 49.7 m2/h. Guard plates attached the print heads add more reliability and robustness to the ColorPainter M-64s.

Integrating advance technology to maximize the performance of WX inks, the Color Painter M-64s delivers unmatched productivity and quality while reducing the impact on the environment.



User-Friendly Features



### Take-Up System with Slide Mechanism

The new media take-up unit offers a new loose mode to reduce stress on the print surface and supports reliable unattended printing. The ColorPainter M-64s also comes with a new slide-out mechanism allowing users to easily load and unload media.



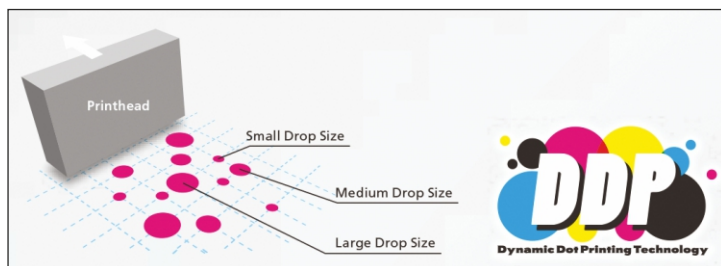
### Automatic Print Adjustment

The ColorPainter M-64s includes new optical sensors that automatically perform both media advance and bi-directional position adjustment. The operator does not have to make complicated manual adjustment when a new media has been installed or when the print mode has been changed. This new automatic print adjustment ensures high quality printing even for first time users.



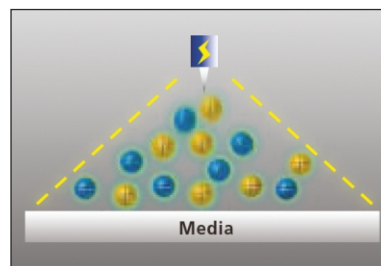
## High Productivity

### DDP - Dynamic Dot Printing Technology



Dynamic Dot Printing Technology controls and optimizes dot size to produce rich, bold and glossy colors with fine details. DDP also creates high density printing without any loss in speed, giving the ColorPainter M-64s backlit film capabilities.

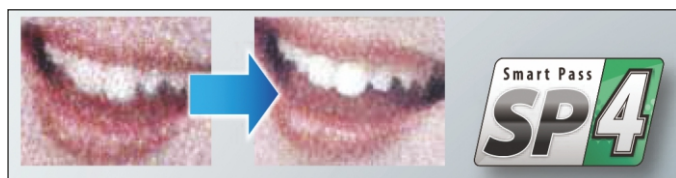
### On-Carriage Ionizer



Static electricity on print media is one of the major factors that cause printing defects. The built-in on-carriage ionizer neutralizes static electricity and eliminates static related print issues, even in a low humidity environment.



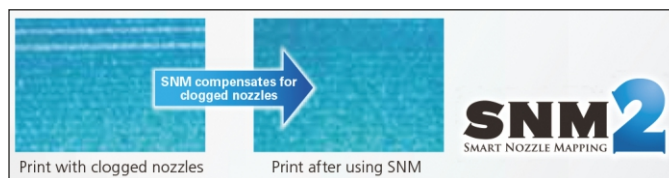
### SP4 - Smart Pass Technology



With improved algorithms and masking technology, the 4th generation of Smart Pass Technology now more effectively reduces overspray and eliminates pass-to-pass banding. Optimizing the effect for each print mode, SP4 brings superb image quality to versatile applications.



### SNM2 - Smart Nozzle Mapping



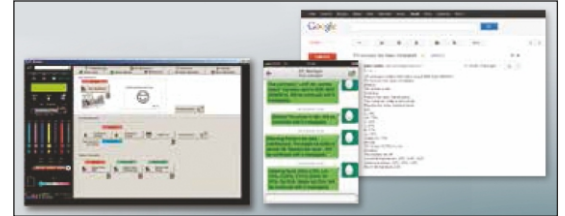
Print with clogged nozzles Print after using SNM SIIT's unique nozzle compensation function evolves to the next level. Smart Nozzle Mapping re-maps clogged nozzles so you can continue to print with perfect image quality. SNM2 can significantly reduce downtime and boost your productivity.





## Media Lifter

The ColorPainter M-64s comes with the new media lifter (jack-up function). It assists easy loading and unloading of heavy media.



## Advanced CP\_Manager Software

Developed specifically for the ColorPainter printers, CP\_Manager, the bundled controller software, allows operators to operate printers from a PC, tablet or smartphone. Operators can communicate and manage the M-64s by email and Twitter through CP\_Manager.

## IP-6620 (OKI M-64s LCIS model)

Print Head	High Frequency drop on demand piezo
Number of Nozzles	508 nozzles/head
Maximum Resolution	900 dpi
Maximum Media Width	1,626 mm (64")
Maximum Print Width	1,616 mm (63.6")
Printing Speed	3.5 to 49.7 smph (38 to 535 sfph)
Media Weight	Up to 50 kg (110 lbs)
Maximum Media Diameter	220 mm (8.7")
Margin Size	5 mm (1/5") on each edge (with rolled media, without edge guards)
Ink Type	Low-Odor and Eco Solvent: WX
Color	6 (C, M, Y, K, Lc, Lm)
Ink Bottle Capacity	1 liter per color (2 bottles/box)
Ink Reservoir Capacity	Maximum 4.5 liters/color
Media	PVC, Banner and other media designed for solvent printers.
Heater	3-way built-in heaters (Pre, Print, After)
Take-up Modes	Loose/Outer, Tension/Inner, Tension/Outer
Interface	USB 2.0
Power Source	200 to 240 VAC, 12A, 50Hz/60Hz
Power Consumption	2,880W or less
Operating Environment	15 - 30 °C (59 - 86 °F), 30 - 70 % RH (no condensation)
Storage Environment	5 - 35 °C (41 - 95 °F), 10 - 80 % RH (no condensation)
External Dimensions	3,095 (W) x 935 (D) x 1,247 (H) mm (122" x 37" x 49")
Weight	321 kg ( 708 lbs) or less without media and inks



### Option

IP6-010	Cutter unit (64")
IP7-013	Exhaust Attachment
IP5-261	2" flange

### Consumables

IP6-241	WX Ink Yellow (2 bottles/set)
IP6-242	WX Ink Magenta (2 bottles/set)
IP6-243	WX Ink Cyan (2 bottles/set)
IP6-244	WX Ink Black (2 bottles/set)
IP6-245	WX Ink Light cyan (2 bottles/set)
IP6-246	WX Ink Light magenta (2 bottles/set)



Ahmedabad Head Office +91 79 2640 4017/18	A'bad-Santej Demo / Training Center +91 79 2640 5048/49	Bangalore +91 80 4146 5808 +91 84 9494 2375	Chennai +91 9099903323	Delhi +91 11 2519 2645 +91 11 2519 2829	Hyderabad +91 9978913414	Kolkata +91 99 7890 9232	Mumbai +91 22 2498 7903 +91 22 2498 7904	Morbi +91 90 9992 0223	Pune +91 9978936070	Surat +91 98 7954 2275
---	---	---	---------------------------	---	-----------------------------	-----------------------------	--	---------------------------	------------------------	---------------------------

www.arrow-digital.com sales@arrow-digital.com