

Take your performance,
efficiency, and quality to
the EXTREME.

VUTEK® 5r+
VUTEK® 3r+
Superwide Inkjet Printers



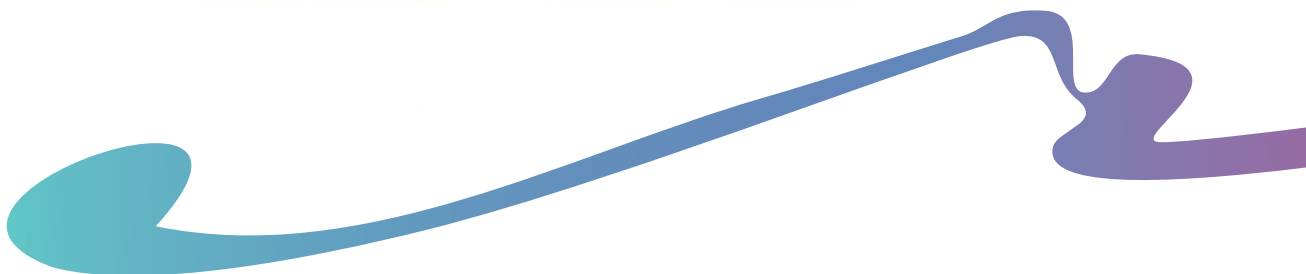
As a high-volume printer, you go to the extreme every day when it comes to job turnaround times, versatility, quality, and satisfying customers. And now there are two printers to get you extreme results.

The EFI™ VUTEK® 3r+ and 5r+ are the most technically advanced three-metre and five-metre LED roll-to-roll printers on the market. We've gone to the extreme to enhance the platform features that offer the highest image quality at the highest rated throughput speeds along with the highest range of options—giving you the lowest total cost of ownership.

Extreme pluses

- + Better speed/quality ratio
- + Newly developed white printing modes with an increase in speed and enhanced quality
- + A completely reengineered printing algorithm, including new printing point conditions, such as pulse, temperature, voltage, and frequency, for higher density and an overall quality improvement
- + Redesigned platform chassis elements for improved media advance, higher robustness, and sustainability
- + New media handling accessories, such as the 7.6 cm metal bar for improved 5-metre-wide media loading
- + New innovative optional features, including the Winder Motorised Air Shaft*
- Extreme media weight of up to 400 kg
- Extreme media diameter of up to 50 cm

Put it all together and you've got an extreme competitive edge.



VUTEk 3r+ and 5r+ printer features and BIG pluses.

EXTREME speed and quality UltraDrop™ TECHNOLOGY

- VUTEk 3r+ up to 398 m² per hour
- VUTEk 5r+ up to 479 m² per hour
- Up to seven colours (CMYKcmk) plus optional white
- UltraDrop™ Technology with native 7 pL printheads with true multi-drop addressability for high-definition image quality, outstanding smoothness in shadows, gradients, transitions, and superb text quality with small text in both standard and high quality with fewer satellites and more clarity in all print modes
- True resolution up to 1200 dpi

EXTREME application range

- Wide range of applications designed for challenging, premium POP as well as high-volume billboards
- + EFI - 3M™ SuperRange XF inks covered under the 3M™ MCS™ Warranty, when printing with co-branded EFI and 3M™ UV inks, including white ink, on 3M™ flexible media¹
- + EFI SuperFlex Inks available for car wrapping and fleet graphics

EXTREMELY cool LED

EFI's industry-leading LED curing technology and all its cost savings and environmental benefits:

- Extends the range of supported substrates, including lower cost and added-value speciality media
- Increases uptime and productivity with instant on/off and less maintenance
- Drives down operating costs with significantly less energy consumption and fewer consumable parts
- Improves control over gloss/matte levels
- Reduces waste with consistent colour output and simple operation
- Satisfies customer requests for greener printing

EXTREMELY easy to use

- Versatile media handling capabilities to support a variety of flexible media
- Carriage height adjustment and wrinkle analyser* to avoid head strikes
- Mobile operator station with touch screen for maximum convenience
- iPhone application* for remote printer tracking

EXTREMELY versatile options

- + White printing with a variety of white printing modes, up to five layers
- + Inline finishing system for all-in-one printing, slitting, and collecting
- + Double-bladed Slitters with .8 cm gap for separating multiple jobs on a single, full-width roll, minimising media waste
- + Automatic Backlit also supports multi-roll, cutting and slitting, and enables printing each side with a different print mode
- + Automatic Blockout is also available for multi-roll and supports cutting and slitting
- + ID Backprint for printing customer information on the back side of the media is now available with white ink for colour-backed media
- + Media Spreaders that prevent media wrinkles and allow printing on challenging media types
- + 3.5-metre-wide Super-Duty Winder for loading heavy media rolls up to 793 kg and up to 65 cm outer diameter
- + Winder Motorised Air Shaft for precise and excellent media collection

* Options

¹ The 3M™ MCS™ Warranty backs graphics printed with the EFI VUTEk 3r+ or VUTEk 5r+ printer on select 3M™ flexible media and printed and applied according to 3M™ Product and Instruction Bulletins. This warranty lasts up to five years on EFI co-branded inks that have a shelf life of 15 months. Nothing herein should be construed as a warranty in addition to the express warranty statements provided with EFI products and services.



VUTEk 3r+ and VUTEk 5r+

Printing technology

- Piezo drop-on-demand inkjet technology
- 18 printheads with 7pL UltraDrop Technology
- Up to 1200 dpi true resolution
- Colours: C, M, Y, K, c, m, k, white (optional)

Media/Handling

- Handles a wide variety of flexible substrates
- Maximum printing width up to 500 cm
- Roll-to-roll, free-fall and multi-roll (3 rolls of 1.6 m for 5 m model, 2 rolls for 3 m model)
- 300% better media utilisation—only 40 cm wasted on each roll loading
- Optional Winder Motorised Air Shaft for precise and excellent media collection
- Optional Super-Duty Rewinder enables working with large media rolls up to 793 kg for continuous, unattended work
- 7.6 cm metal bar for improved 5m-wide media loading

Productivity

- Production: up to 479 m² per hour
- Quick and easy media loading

Genuine EFI Inks

- EFI - 3M™ SuperRange XF Inks
 - LED-curable UV inks
 - Small dot gain
 - Wide colour gamut
 - Environmentally friendly
 - Superb durability
- EFI SuperFlex Inks for car wrapping and fleet graphics

Environmental considerations

- Compressed air: 6.5 bar airflow of 110 L/min, dry and clean air only (not included)
- Operating temperature: 20 °C - 30 °C
- Humidity:
 - Standard range: 30% - 80% (non-condensing)
 - Optimal range: 50% - 80% (non-condensing)
- Machine weight:
 - VUTEk 3r+: 4,400 kg; crated: 5,900 kg
 - VUTEk 5r+: 5,500 kg; crated: 7,000 kg
- Height: 220 cm; with emergency light: 250 cm
- Width:
 - VUTEk 3r+: 688 cm
 - VUTEk 5r+: 840 cm
- Depth: 155 cm
- Electrical: 230/380 VAC 3 Phase +N + PE 32 amp 50/60 Hz - printing consumption: 2.9 kW, peak consumption: 5.7 kW
- Chiller: Cooling capacity 3.6 kW – required for LED UV curing (included)

Fiery Digital Front End

- Ships with the EFI Fiery® proServer Premium digital front end, with these features:
 - FAST RIP (Fiery Accelerated System Technology)
 - Spot Color, Color Profiler, Color Verifier, Cut Marks and file export options
 - EFI ES-2000 spectrophotometre
 - 1x printer option EFI, 1x printer option, M/XL/XXL
- File formats: EPS, PS, TIFF, PDF, JPEG



ARROW DIGITAL PVT. LTD.



1005-1006, Aditya - 10th Floor Opp. Sardar Patel Seva Samaj Chimanlal Girdharlal Road Mithakhali, Navrangpura, Ahmedabad - 380006. Gujarat - India. Tel: +91 79 2640 4017 / 18, +91 79 2640 5048 / 49

Demo Center - Ahmedabad

Branches - Delhi, Mumbai, Indore, Bangalore, Kolkata, Pune, Hyderabad, Chandigarh, Chennai

www.arrow-digital.com

sales@arrow-digital.com

Connect with us on...

