

Future-proof your business with a powerful competitive edge

For today's forward-thinking, high-volume sign and display graphics printers who want to lead, not follow, the EFI™ VUTEK® h series platform is the future of digital printing.

VUTEK® h5

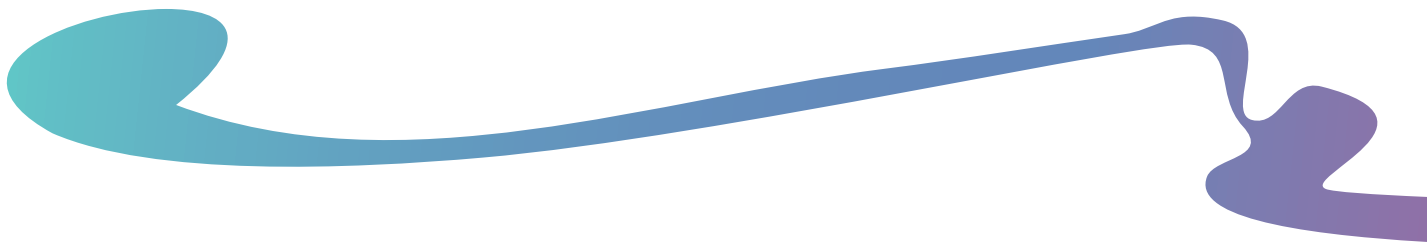
Superwide Hybrid Inkjet Printer



The EFI VUTEk h5 is the future of digital printing, right now. We have reimagined, reinvented, reengineered, and refined the high-volume, superwide-format hybrid inkjet platform from the ground up. The result is huge revolutionary leaps that take your business higher in terms of productivity, print quality, reliability, capability, and profits. All with the ease of use and LED environmentally-friendly benefits you expect from an industrial-built VUTEk printer from EFI.

At a glance

- Next-generation, 3.2-metre hybrid roll/flatbed LED inkjet printer platform
- Print resolution up to 1200 dpi
- Four (optional) or eight colour modes plus white, and up to nine-layer print capability in a single pass
- Productivity up to 109 boards per hour
- High-velocity UltraDrop™ Technology 7pL greyscale printheads deliver precision dot placement and consistency from print to print at high production speeds
- Powerful EFI LED technology
- Skip-white functionality in x and y direction
- Mechanical crash and wrinkle detection and media height measurement for even greater printing accuracy and consistency
- *ImageEdge* technology for fast and easy printhead replacement
- Touch screen monitors on printer's input and output side
- Automated table and carriage alignment
- Camera-based vision system for subpixel alignment, printhead density balance, and step and bidirectional set up
- Modular drop-in ink delivery system design eliminates ink waste and provides fill-while-printing functionality for continuous productivity
- DC power supply and safety programmable logic controller (PLC) with fewer connection points for higher efficiency, reliability, and uptime
- Built-in power monitoring and on board diagnostic features (LED check points) for faster troubleshooting for both remote and on-site service
- Automated media handling options to meet any production need, including new 3/4 automated media loading and stacker systems and super duty winders
- EFI Fiery® proServer Premium digital front end with Fiery Command WorkStation®, FAST RIP and enhanced colour management and screening features
- Cloud and diagnostics services, including EFI GO mobile management application



The ultimate printing innovation — UltraDrop Technology from EFI



Demanding customers want ultra quality, ultra crispness, and ultra capabilities.

That's why EFI's UltraDrop Technology offers smaller drop sizes and more precise control. The results are ultra impressive:

- Native 7pL printheads with true multi-drop addressability
- High apparent resolution and high-definition print quality
- Outstanding smoothness in shadows, gradients, and transitions
- Superb text quality with three-point text in both standard and high quality with fewer satellites and more clarity in all print modes

The power of green LED technology



Brilliantly designed "cool cure" LED technology empowers you with the ability to do more for less. Increase your profit opportunity

by offering more premium-margin jobs while reducing operating costs and your environmental footprint:

- Extends your range of supported substrates, including lower cost and added-value speciality media
- Increases uptime and productivity with instant on/off and less maintenance
- Drives down operating costs with up to 82% less energy consumption according to a Fogra study* and fewer consumable parts
- Reduces waste with consistent colour output and simple operation
- Satisfies customer requests for a greener print solution with low VOCs, lower power consumption, and less waste and consumables

*EFI's VUTEk LED printers show energy reductions of up to 82% when compared with devices with conventional mercury arc lamps. Calculations from Fogra's Energy Efficiency Project, or "Energy Efficiency of Large and Small Format Printing Systems."



EFI VUTEk h5

Media/handling

- Handles flexible and rigid substrates up to 3.2 m wide and up to 5.08 cm thick
- Maximum sheet weight: 90.7 kg
- Multi-roll capable: two 152 cm rolls
- Maximum roll weight: 180 kg
- Maximum roll diameter: 30 cm
- Automated media handling options:
 - Wide heavy-duty and roller tables
 - Material Edge Guides (MEG)
 - Three-quarter automated media loader and stacker
 - Super duty winder and rewinder

Productivity

- Up to 109 boards per hour

Environmental considerations

- Compressed air: 7.5–10 bar at 453 l/min – dry air only (not included)
- Fully enclosed design for operator safety and environmental considerations
- Temperature: 20 °C–30 °C
- Humidity: 30%–80% (non-condensing)
- Machine weight: 3400 kg
- Printer dimensions (L x W x H): 155 cm x 645 cm x 193 cm
- Electrical: 400–480 VAC at 30 Amps, 3 phase (N America/Europe); 50 or 60 Hz; four wire (3 phase + Earth Ground)

Genuine EFI Inks

- Supplied in 5.0 litre containers
- Expanded gamut CMYK pigments for world-class Pantone® matching
- EFI pigment dispersions ensure optimised size and concentration for best-in-class ink stability

EFI Fiery digital front end

- Ships and optimised for use with the EFI Fiery proServer Premium, featuring:
 - FAST RIP (Fiery Accelerated System Technology)
 - Spot Color, Color Profiler, Color Verifier, Cut Marks, and File Export options
 - EFI ES-2000 spectrophotometer
 - Optimised for one EFI printer
 - 1x M–XXL printer option
 - Fiery Sign Flow option
- Powerful production tools, such as nesting, step and repeat, scaling, cropping, barcode creation, and tiling
- Advanced ICC colour management for reliable colour, quality output, and proofing-quality colour
- Built-in spot colour libraries and sophisticated spot colour handling
- Bidirectional communication capability between the Fiery XF digital front end (DFE) and printer allows back communication of audit information on every print job
- Part of the EFI ecosystem integrating to EFI Pace® and Digital StoreFront™

Enhanced Service Program (ESP)

- EFI's industry-leading service and support program for your printer, Fiery proServer hardware, and Fiery XF software
- Twelve months of Essential coverage, with 24-business hour (three-business day) response
- Eligible for upgrade to:
 - Critical: Providing eight-business-hour (one-business-day) response
 - ProActive: Providing 16-business-hour (two-business-day) response



ARROW DIGITAL PVT. LTD.



1005-1006, Aditya - 10th Floor Opp. Sardar Patel Seva Samaj Chimanlal Girdharlal Road Mithakhali, Navrangpura, Ahmedabad - 380006. Gujarat - India. Tel: +91 79 2640 4017 / 18, +91 79 2640 5048 / 49

Demo Center - Ahmedabad

Branches - Delhi, Mumbai, Indore, Bangalore, Kolkata, Pune, Hyderabad, Chandigarh, Chennai

www.arrow-digital.com

sales@arrow-digital.com

Connect with us on...

