

Level up your game

COLORADO M-SERIES

Are you ready for the next level in productivity, creativity and profitability? With the Colorado M-series, you can say 'yes' to more jobs, create stunning applications and promise short turnaround times. It's field upgradeable to grow with your business, and designed for a low cost of ownership.



READY, SET, GO!

- + **The power of UVgel.** Our unique UVgel technology creates robust, light-fast and scratch-resistant prints with a superior print quality.
- + **White without worry.** Developed for the Colorado M-series, our UVgel ink set now brings you a next-level white ink: hassle-free and with spectacular results. With a brief service visit, you can even enjoy UVgel white.
- + **FLXfinish*.** A game-changer in large-format graphics. Print matte, gloss or mixed matte and gloss in one print, without varnish or an additional printhead.
- + **Impressive media range.** More design freedom to impress your customers. Easily print textured, transparent, coloured, reflective, magnetic and heat-sensitive media, plus many more!
- + **Upgradeable without service visits.** Is your business changing course or growing quickly? Easily add speed, FLXfinish*, magnetic media support and many other new functionalities to your Colorado M-series printer.
- + **Rock-solid quality.** The Colorado family is built to last, for high uptime and consistent print output. Reliable from print to print and from year to year.
- + **Level up your Colorado into a Factory.** Add a jumbo roll bulk feed system and perfectly matching finishing modules for a high throughput and overnight jobs.
- + **Designed with sustainability in mind.** Reduced ink usage, reduced energy usage, low emissions – reduce your costs and your environmental footprint at the same time.



Colorado M-series

Technical specifications
imperial



COLORADO
M5



COLORADO
M5W



UVGEL
WALLPAPER
FACTORY



UVGEL
PRINT
FACTORY

PRINTING				
Printing method	UVgel piezoelectric inkjet			
White	○	●	○	○
Printing modes: gloss	●			
High Key	1,709 ft ² /hr			
Express	1,229 ft ² /hr			
Speed	861 ft ² /hr			
Production	610 ft ² /hr			
High Quality	427 ft ² /hr			
Premium	290 ft ² /hr			
Specialty	222 ft ² /hr			
Printing modes: matte	○			
Express	495 ft ² /hr			
Speed	409 ft ² /hr			
Production	333 ft ² /hr			
High Quality	290 ft ² /hr			
Specialty	215 ft ² /hr			
Backlit	215 ft ² /hr			
Backlit Density	108 ft ² /hr			
Printing mode: mixed matte/gloss	○			
FLXfinish*	75 ft ² /hr			
Printing modes: spot white 1 layer				
Express	388 ft ² /hr			
Speed	323 ft ² /hr			
Production	258 ft ² /hr			
High Quality	194 ft ² /hr			
Specialty	129 ft ² /hr			
Printing modes: white underflood/overflow 2 layers				
Speed	215 ft ² /hr			
Production	151 ft ² /hr			
High Quality	108 ft ² /hr			
Specialty	75 ft ² /hr			
Printing modes: white 3 layers				
High Quality	75 ft ² /hr			
Specialty	54 ft ² /hr			
Printing modes: white 5 layers				
High Quality	43 ft ² /hr			
Specialty	32 ft ² /hr			
Print resolution	Up to 1,800 dpi			
Ink types	Canon UVgel 460 ink			
Ink color	CMYK	CMYKW	CMYK or CMYKW	CMYK or CMYKW
Ink packaging				
2 x 1 litre ink bottle	●			
Ink reservoir per ink color	2.1 litre			
Refill while printing	●			



COLORADO
M5



COLORADO
M5W



UVGEL
WALLPAPER
FACTORY



UVGEL
PRINT
FACTORY

Printhead				
UVgel 425	4	5	4 or 5	4 or 5
High frequency drop-on-demand piezo-electric printhead			●	
PAINT (Piezo Acoustic Integrated Nozzle Technology)			●	
Automatic maintenance			●	
Curing			UV LED	
MEDIA				
Roll width	Up to 64" (1,625 mm)			
Print margin	0.21" (5.3 mm)*			
Roll weight	Up to 110 lbs (50 kg)			
Roll diameter	Up to 8.7" (220 mm)			
Media thickness	Up to 0.03" (0.8 mm)			
Media input				
Print side out			●	
Print side in/Double-sided printing			○	
1 roll			●	
2 rolls (automatic roll-feeding and -switching depending on media)			○	
Magnetic media kit			○	
Jumbo roll interface	○	○	●	●
UVgel Technology				
Instant pinning and dot gain control			●	
Low temperature curing - suitable for thin and heat-sensitive media			●	
Outstanding scratch resistance			●	
Easy lamination, smooth ink film			●	
High precision colour-matching and consistency			●	
Odourless and instant dry printout			●	
FLXfinish*			○	
CERTIFICATIONS				
Environmental and safe use	Indoor AgBB, GREENGUARD Gold, CE EN 15102 (decorative wall coverings) ASTM F793 Type II, M1, B-s1d0, Émissions dans l'air intérieur A+			
Media	3M™ MCS™ Warranty/Avery Dennison ICS Performance Guarantee/Mactac's Open-Image Warranty SM			
INTERFACE				
	Ethernet (100/1.000 Mbit/s)			
DIMENSIONS				
Printer W x D x H	119 x 43 x 52"			
WEIGHT				
Printer	1,653 lbs			
WORKING ENVIRONMENT				
Operation printer	64 - 86°F (recommended 68 - 81°F) 20 - 80% RH (no condensation) (recommended 30 - 60%)			
POWER				
Off	0 W			
Standby	250 W			
Ready	1,350 W			
Printing	2,000 W			

* Margin 11.0 mm when Media Step Control enabled - Specifications subject to change without notice.

● Standard ○ Optional - Not available



COLORADO M5



COLORADO M5W



UVGEL WALLPAPER FACTORY



UVGEL PRINT FACTORY

Consumption	2 inputs, each 200-240V +/- 10%, 50/60 Hz, 16/6 A.
Source	Printer is declared under Radio Equipment Directive (RED)- 2014/53/EU

REGULATORY CERTIFICATION

Declaration of conformity	Compliant with EN62479, EN301 489-1, EN301 489-3, EN300-330 FCC Part 15 and RSS-210 certified (module)
Radio	IEC/EN/UL/CSA 62368-1 compliant Applicable marks: CE, TÜV-GS, C-UL-US, RCM
Safety	Emission: Class A compliant according CISPR 32, FCC part 15 and ICES-003 Immunity: CISPR 35 compliant Applicable marks: CE, FCC, IC, VCCI, RCM, CETECOM

EMC

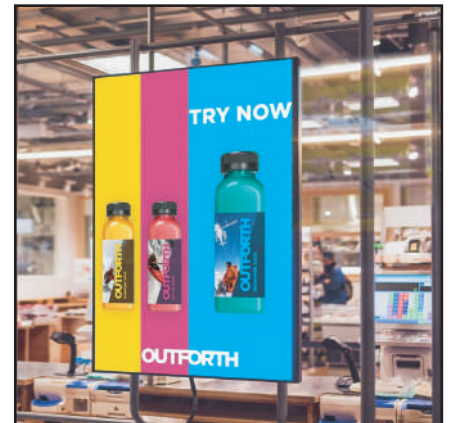
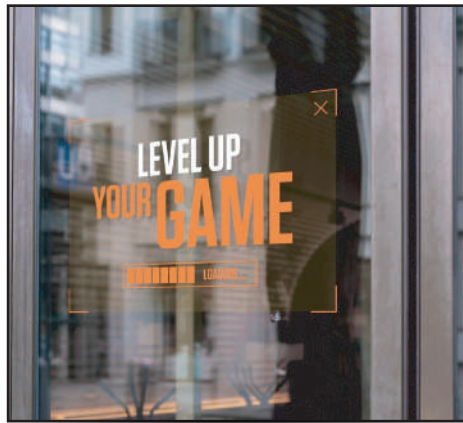
Environmental	WEEE, RoHS directive 2011/65/EU, REACH, CE
---------------	--

SOFTWARE

Factory supported RIPs	ONYX Graphics, Caldera
Supported RIPs	EFI, PrintFactory, ColorGATE, ErgoSoft, Shiraz, AGFA, SAI
API	Colorado API for 3rd party vendors
PRISMAguide XL	o
PRISMA remote app	•
PRISMAservice	•

EXTERNAL MODULES

Jumbo Roll Loader	-	-	-	-	•	•
X/Y Cutter	-	-	-	-	•	-
Rewinder	-	-	-	-	o	-
Jumbo Roll Rewinder	-	-	-	-	-	•



1005-1006, Aditya - 10th Floor, Opp. Sardar Patel Seva Samaj, Off. C G Road, Mithakhali, Navrangpura, Ahmedabad - 380006. Gujarat - India. Tel. : +91 79 26404017 / 18, +91 79 26405048 / 49
Demo Center - Ahmedabad
Branches : Delhi, Mumbai, Indore, Bengaluru, Kolkata, Pune, Hyderabad, Chandigarh, Chennai

Connect with us on..



www.arrow-digital.com sales@arrow-digital.com