



## Nozomi SD Series

Single-pass LED Inkjet Printers for Sign and Display



Technology designed to disrupt

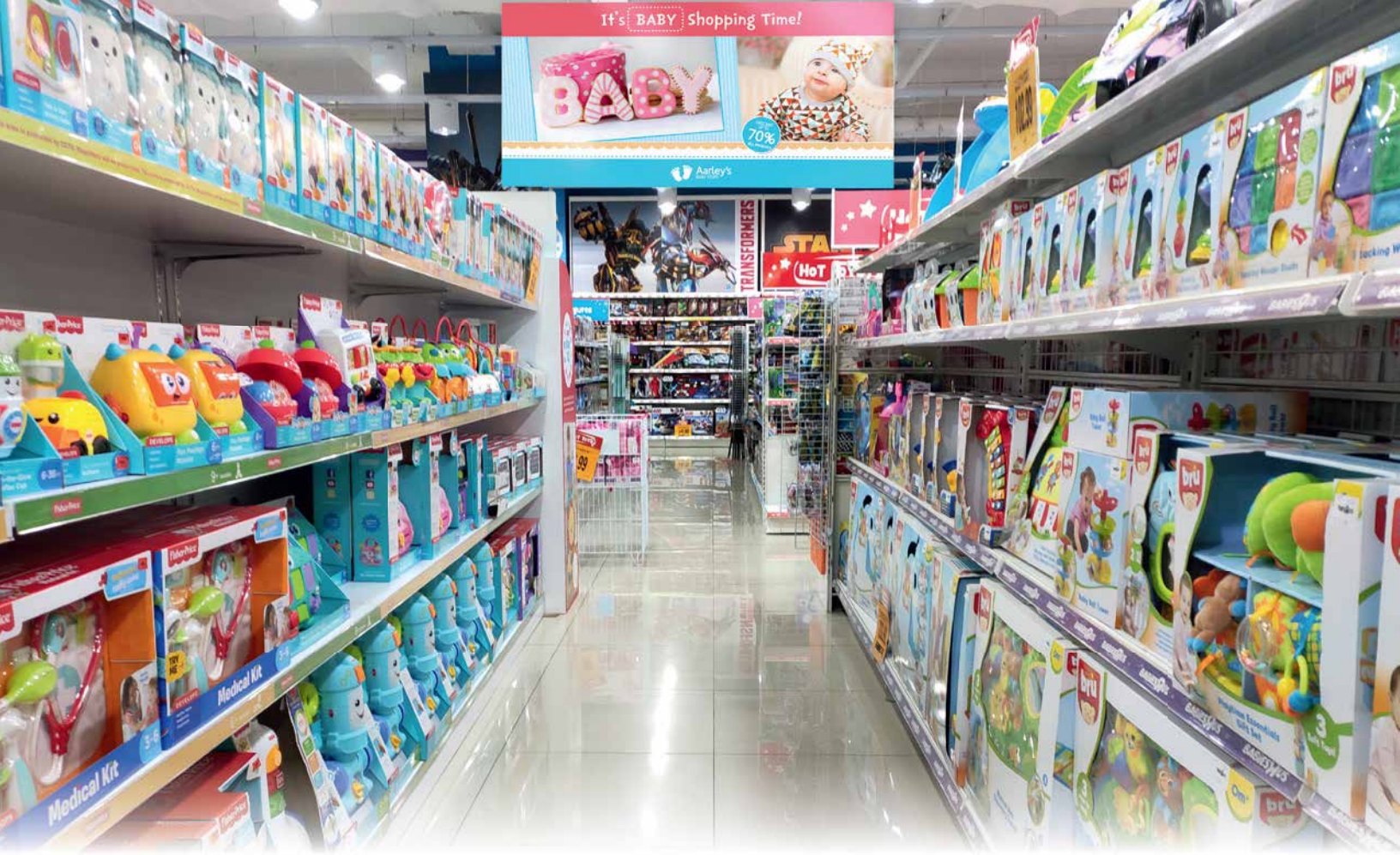


# Boost your growth and profitability

The super-high-speed, high-quality production capabilities of the EFI™ Nozomi SD Series single-pass LED printers are nothing short of disruptive. The 1.4-meter and 1.7-meter-wide printing platforms give you the opportunity to significantly improve your speed to market and increase profitability.

The EFI Nozomi 14000 SD and 17000 SD printers are specifically designed for the sign and display market and print on a wide range of substrates – from polystyrene, foamboard, and Coroplast® to folding carton, card stock, and more.





## Disrupt the status quo with exceptional print quality at super high speeds

Ready to disrupt marketplace expectations about digital inkjet image quality at super high speeds? The EFI Nozomi SD printers delivers premium quality imaging with CMYK plus optional White, Orange and Violet, a 720-dpi effective resolution, smooth gradients, and brilliant colors for litho-like quality and band-free imaging.

# A competitive edge is only sharp when it's disruptive

Gain a larger share of the market and improve customer satisfaction – all while lowering your costs. With the EFI Nozomi 14000 SD and 17000 SD printers you'll get higher productivity, reliable uptime and production efficiencies that will drive more profits to your bottom line.



# The best opportunities are disruptive opportunities

---



## Maximum productivity that assures more profits

- Up to 1,100 boards/sheets per hour\*
- Up to 196 linear ft/min (60 linear m/min)\*\*



## Premium print quality that wins more jobs

- Optional Orange and Violet expand color gamut to achieve 97% of Pantone® library
- Artificial vision system
- Meets the demanding color standards of Fogra, G7 and GRACoL, ensuring color consistency throughout the digital printing process and other printing methods



## Digital technology that drives production savings

- Reduce your cost-per-print by replacing make-ready from offset litho or screen print processes with digital
- Reduce your footprint and labor resources by consolidating production onto one Nozomi press
- Reduce your waste by printing direct to sheet and removing the lamination process



## Superior sustainability that meets customer demands

- An efficient process that consumes fewer resources and generates less waste by consolidating all production onto one Nozomi press
- Single-pass ink pile reduces ink use and cost
- **100% environmentally friendly** GREENGUARD and GREENGUARD Gold certified inks with no VOCs and no odor
- Repulpable and recyclable inks, OCC certified, for paper-based substrates such as corrugated containerboard

\* Sheet size: 55.2 in x 118.1 in (140 cm x 300 cm).

\*\* Consult the specifications of the tested materials as well as the recommendations for optimal printing.

# Modular and flexible, designed to grow as your business grows

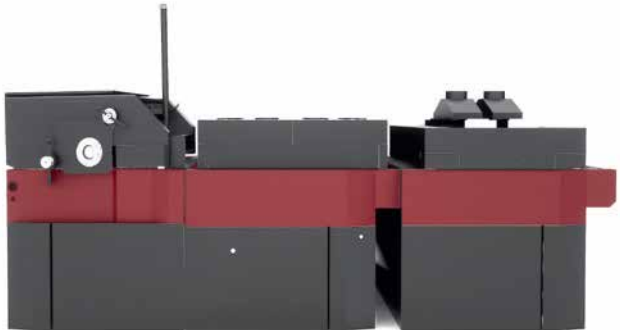


**UV AND WB ANALOG PRIMER**  
149.6 in · 3,8 m

**REGISTRATION TABLE**  
141.7 in · 3,6 m



**SINGLE-PASS INKJET PRINTER  
UV LED TECHNOLOGY**  
149.6 in · 3,8 m



**UV / WB ANALOG COATER (OPTIONAL)**  
98.4 in · 2,5 m

Max. print size (WxL): Nozomi 14000 SD: 55.12 in x 118.11 in · 140 x 300 cm  
Nozomi 17000 SD: 6.93 in x 118.11 in · 170 x 300 cm

Max. board/sheet size (WxL): Nozomi 14000 SD: 55.12 in x 120.08 in · 140 cm x 305 cm  
Nozomi 17000 SD: 66.93 in x 120.08 in · 170 cm x 305 cm

Thickness range: 0.012 in – 0.47 in · 0,3 mm - 12 mm for media that need priming  
(rigid substrates) 0.007 in – 0.47 in · 0,19 mm - 12 mm for media without priming

Regular productivity: Up to 196 linear ft/min (60 m/min)

Consult the specifications of the tested materials as well as the recommendations for optimal printing.

A scissor lift table (not included) is recommended to assist in the hand feeding of materials,

### NOZOMI 14000 SD INK CONFIGURATIONS



### NOZOMI 17000 SD INK CONFIGURATIONS





## Ultra-high-quality printing with **Genuine EFI Inks**

Our Genuine EFI Nozomi SD Series Inks have been custom formulated, tested and optimized for the Nozomi 14000 SD and 17000 SD printers. Both the systems and inks are developed to assure you get great extended color gamut, durability, reliability, consistency, and predictable running costs. Add our extensive color range and best-in-class Fiery® color management suite, and you get all the quality and performance you'd expect from Genuine EFI Inks – so you always print with flying colors.



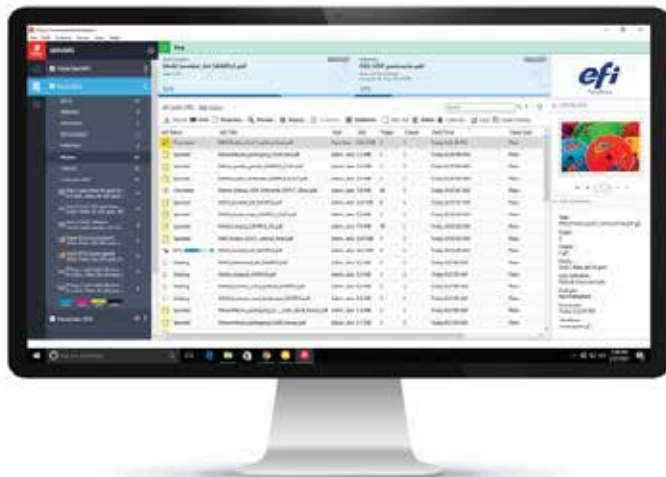
# Fiery technology – the **world leader** in digital front end innovation



EFI Fiery digital front ends (DFEs) are the industry standard and the most popular choice across multiple print environments. To succeed in today's highly competitive market, it is critical to have a DFE with integrated workflow and color management to achieve higher operational efficiency and output quality. The Fiery NZ-1000 DFE provides outstanding image and color quality with features to make your print results truly exceptional.

## Fiery technology delivers:

- Advanced color management and extensive toolset for late-stage image editing
- Exceptional print and color quality for complex, graphically rich content
- Stunning out-of-the-box color with the smoothest color blends, maximum shadow detail, and superb image definition
- Accurate reproduction of brand colors plus color matching for consistent print results
- Intelligent automation that can analyze print jobs and dynamically choose the optimal print settings, reducing setup time
- Efficient job management with easy handling of short runs and versioned or variable data printing jobs
- Full visibility into your production with accurate ink estimates and reporting of the actual ink used in print
- Advanced bladed hardware architecture with the processing power to ensure the highest throughput



*Centralize print production control with Fiery Command WorkStation's intuitive job management interface*



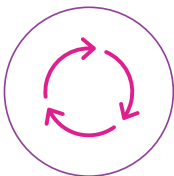
# Value-added training and services working for you

We're there with you every step of the way – during installation, the ramp-up process, and during regular and intensive use – with the only purpose to ensure that you get the most out of your EFI Nozomi 14000 SD or 17000 SD single-pass printing investment.



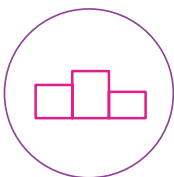
## Ramp-up program

This 12-week program is designed to accelerate the learning curve and increase operator confidence with three weeks of hands-on operator and maintenance training plus nine weeks of onsite mentoring as you reach steady production.



## Three keys of extended follow-up

With a focused goal of total machine stability, our extended follow-up is focused on three key areas: production monitoring, training, and maintenance. A senior field service engineer (FSE) works with you onsite for three months, and you're fully supported 24/7 by our remote support team.



## Maintenance service

We offer different maintenance agreements levels based on production volumes for you to choose from to maintain optimal print quality, machine stability and reinforce technical training. The maintenance programs include routine procedures and best practices to ensure optimum condition of all components and to avoid unforeseen downtime.



## Smart support

Remote training and support enhanced with augmented reality for real-time, see-what-I-see communication and faster time to resolution.

# Add **intelligence** to your print business with Fiery IQ

Unlock the value of your production data by connecting your printers to Fiery IQ™. Use the Fiery IQ suite of cloud applications to make data-driven decisions so you can improve ROI, minimize cost, maximize profit, and boost revenue.



Fiery IQ lets you connect your people, processes, and print devices, so you can make better data-driven decisions. Use the Fiery IQ applications to:

- Visualize key production data and the status of your printers in near real time
- Capture and transform print production data into actionable analytics to drive business improvement
- Stay connected to your print production systems, view print devices and monitor job data anytime, anywhere from your iOS and Android devices
- Receive alerts about production-blocking events, and automate the distribution of reports to ensure that you never miss any production issue

Build a stronger, more profitable business with your production data using Fiery IQ applications.



ARROW DIGITAL PVT. LTD.



1005-1006, Aditya - 10<sup>th</sup> Floor, Opp. Sardar Patel Seva Samaj, Off. C G Road, Mithakhali, Navrangpura, Ahmedabad - 380006. Gujarat - India.

Tel.: +91 79 26404017 / 18, +91 79 26405048 / 49

Demo Center - Ahmedabad

Branches : Ahmedabad, Bengaluru, Delhi, Indore, Kolkata, Mumbai, Pune, Surat

[www.arrow-digital.com](http://www.arrow-digital.com)

[sales@arrow-digital.com](mailto:sales@arrow-digital.com)