

Profit from the cool capabilities of LED.

Produce more jobs, extend your application offering with more substrates, and lower your operating costs with the EFI™ VUTEK® GS3250Lx Pro with UltraDrop™ Technology. Very cool!

*VUTEK® GS3250Lx Pro
with UltraDrop Technology
Superwide Inkjet Printer*

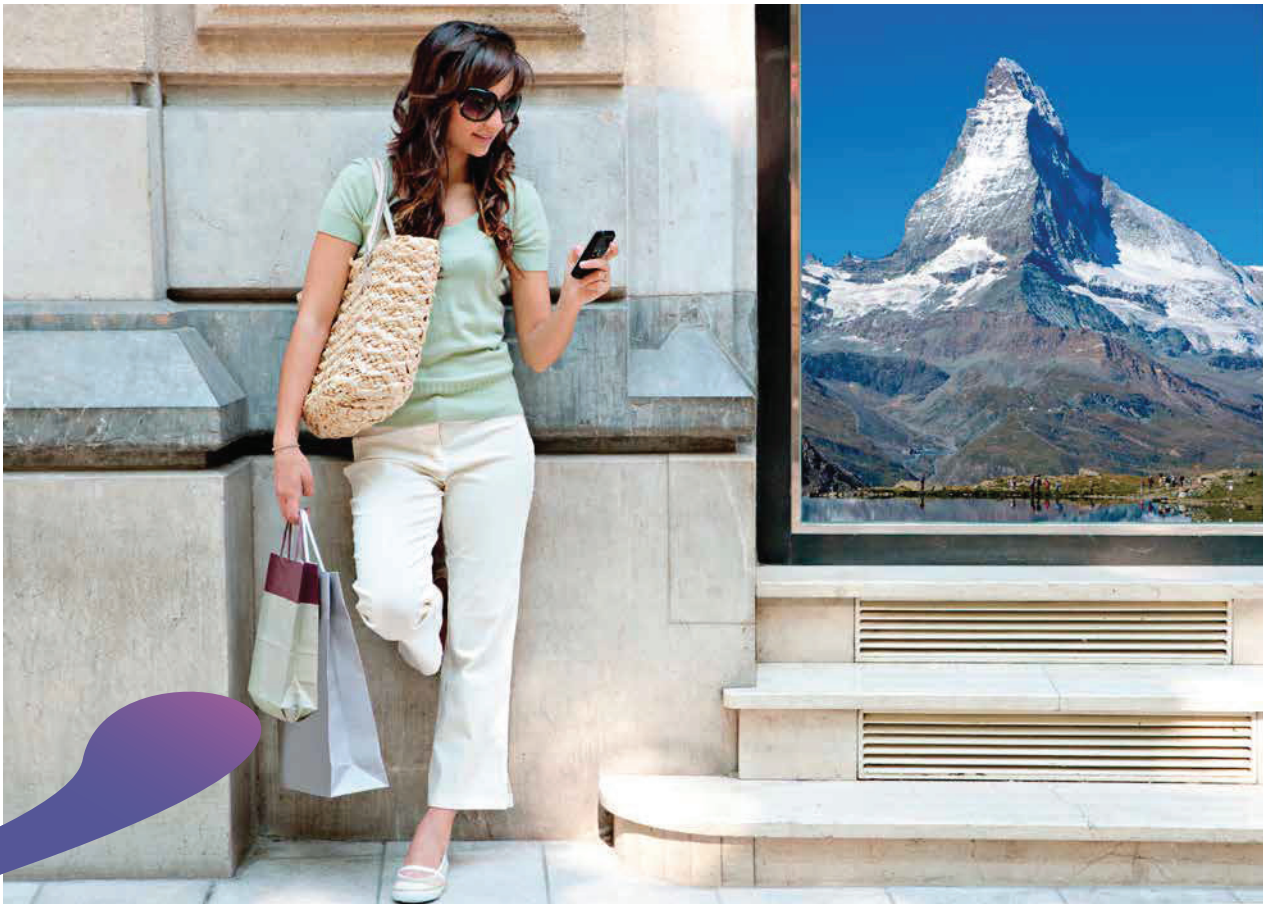


At a glance

The versatile, efficient, cost-effective, and environmentally friendly VUTEk GS3250 *ix* Pro with UltraDrop Technology printer features:

- Eight colours plus two additional channels:
 - White ink in a single- or dual-channel configuration to capture more premium-margin applications
 - Clear varnish in a single-channel configuration to extend your application offering
- Switchable to Fast-4™ for high productivity
- Resolutions of true 600 dpi or 1000 dpi
- Extended range of supported substrates with innovative LED technology
- Greyscale 7pL UltraDrop Technology
- Orion operating system
- Fast-4: 223 m² per hour
 - Up to 60 – 1.2 m x 2.4 m boards per hour
- Eight-colour plus white: 111 m² per hour
 - Up to 32 – 1.2 m x 2.4 m boards per hour
- Continuous print productivity with less than five seconds between boards for faster job turns
- Single-pass multilayer printing
- Standard multi-queue on-demand functionality
- Precision alignment fence for accurate image alignment
- Bidirectional communication capability between the Fiery XF DFE and printer
- Integrates seamlessly with EFI Web-to-Print and MIS/ERP solutions with native JDF connectivity





This fully loaded, production-level LED hybrid flatbed/roll-fed printer extends image quality, the range of supported substrates, and your bottom line with innovative LED curing technology and greyscale 7pL UltraDrop Technology.

The power of green LED technology.



Brilliantly designed “cool cure” LED technology empowers you with the ability to do more for less. Increase your profit opportunity by offering

more premium-margin jobs while reducing operating costs and your environmental footprint:

- Extends your range of supported substrates, including lower cost and added-value speciality media
- Increases uptime and productivity with instant on/off and less maintenance
- Drives down operating costs with up to 82% less energy consumption according to a Fogra study* and fewer consumable parts
- Reduces waste with consistent colour output and simple operation
- Satisfies customer requests for a greener print solution with low VOCs, lower power consumption, and less waste and consumables

The ultimate printing innovation. UltraDrop Technology from EFI.



Demanding customers want ultra quality, ultra crispness, and ultra capabilities. That’s why EFI’s

UltraDrop Technology offers smaller drop sizes and more precise control. The results are ultra impressive:

- Native 7pL print heads with true multidrop addressability in each dot position
- High apparent resolution and high-definition quality with four-level greyscale and two ink density levels
- Outstanding smoothness in shadows, gradients, and transitions
- Superb text quality with four-point text in both standard and knockout with fewer satellites and more clarity in all print modes

*EFI’s VUTEk LED printers show energy reductions of up to 82% when compared to devices with conventional mercury arc lamps. Calculations from Fogra’s Energy Efficiency Project, “Energy efficiency of large and small format printing systems.”

Media/Handling

- Handles flexible and rigid media up to 3.2 m wide and up to 5.08 cm thick
- Multi-roll capable (two 152 cm rolls)
- Optional heavy-duty unwinder (HDU)
- Optional extension table with casters
- Optional small depth extension table

Productivity

- Best Quality Mode (1000 dpi, 8 colour, heavy smoothing) 26 m² per hour
- POP Quality Mode (600 dpi/greyscale, 8 colour, light smoothing) 84 m² per hour
- Up to Speed (600 dpi/greyscale, Fast-4, no smoothing) 223 m² per hour

Environmental considerations

- Compressed air: 8–10 bar maximum at 340 l/m – dry air only (not included)
- Fully enclosed design for operator safety and environmental considerations
- Temperature: 20 °C to 30 °C
- Humidity: 30% to 80% (noncondensing)
- Machine weight: 3039 kg
- Height: 167.6 cm
- Width: 630 cm
- Depth: 160 cm
- Electrical: 3-Phase, 20 amps @ 200–230 volt supply or 10 amp @ 400–460 volt supply

Genuine EFI Inks

- Supplied in 5.0-litre containers
- Expanded gamut CMYK pigments for world-class Pantone® matching
- EFI pigment dispersions ensure optimised size and concentration for best-in-class ink stability



Enhanced Service Program (ESP)

- Thirteen months of Essential coverage, with 24-business hour (three-business day) response
- Eligible for upgrade to:
 - Critical: 8-business hour (one-business day) response
 - ProActive: 16-business hour (two-business day) response



ARROW DIGITAL PVT. LTD.



1005-1006, Aditya - 10th Floor Opp. Sardar Patel Seva Samaj Chimanlal Girdharlal Road Mithakhali, Navrangpura, Ahmedabad - 380006. Gujarat - India. Tel: +91 79 2640 4017 / 18, +91 79 2640 5048 / 49

Demo Center - Ahmedabad

Branches - Delhi, Mumbai, Indore, Bangalore, Kolkata, Pune, Hyderabad, Chandigarh, Chennai

www.arrow-digital.com

sales@arrow-digital.com

Connect with us on...

