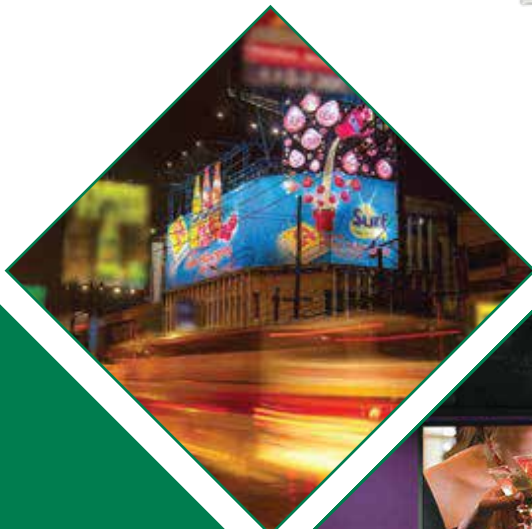


The **ultimate** wide-format business tool

Pro 16h+

Wide Format Hybrid Inkjet Printer



Boost your production + image quality

The EFI™ Pro 16h+ production-level, hybrid flatbed/roll-fed LED inkjet printer is the ultimate business tool if you want to expand into higher-margin wide-format graphics or upgrade your current capabilities. The Pro 16h+ printer delivers outstanding image quality at production speeds up to 50% faster than the original model, white ink, and up to five-layer printing in any color in a single pass. Plus, new high-performance EFI ProGraphics™+ Series LED Inks print on a wide range of substrates for nearly limitless applications – all while keeping the total cost of ownership low.



+ business growth

Ultimate hybrid production-level printing for faster job turns

- Versatile 65 inch- (165 cm-) wide hybrid flatbed/roll-fed printer
- Rigid and flexible media support up to two inches (5.08 cm) thick with quick and easy changeover
- Production quality printing at 317 ft²/hr (29 m²/hr)
- Front and back media pressure rollers for handling a wider range of media
- Semi-continuous board feeding with print job start from the front or back of the printer for easy operation
- Advanced, four chamber media-platen vacuum system with independent power controls ensures efficient hold down, no media movement, and easy transition between jobs
- Dual movable foot pedal to start the vacuum from any side of the printer
- Quick printer recovery if carriage crashes with media

Ultimate image quality for increased customer satisfaction

- Four colors plus two white channels come standard
- Resolution up to 1200 x 1200 dpi
- True variable drop grayscale printing with 5pL drop sizes for saturated colors, smooth gradients, and fine text
- Magnetic linear drive control and high-volume ink jetting at an accurate level ensures precise dot placement for sharper lines and text and less overspray

Ultimate capabilities for more applications and higher profits

- CMYK plus EFI best-in-class white ink in opacity and color gradient
- Multilayer printing in any color up to five layers in a single pass for more high-value applications
- EFI LED technology for more profit opportunities with the ability to print more premium-margin jobs while lowering your operating costs and environmental footprint:
 - Extends your range of supported substrates to include thinner/lower cost and heat-sensitive specialty media
 - Increases uptime and productivity with instant on/off lamps and less maintenance
 - Drives down operating costs with less energy consumption and fewer consumables
 - Reduces media and ink waste with consistent color and simple operation
 - Offers a greener print solution with low VOC inks, lower power consumption, and less waste and consumables

Ultimate performance with EFI ProGraphics+ Series LED Inks

- Remarkable open time - eliminating the need to purge or wipe printheads between jobs
- Improved jetting performance increases uptime and reliability
- Improved adhesion, elongation, and water resistance, while retaining the same surface cure as the ProGraphics POP UV inks
- Environmentally friendly: Do not contain heavy metals, virtually no VOC emissions, TPO and THFA free, and formulated to meet EU regulations

TECHNICAL SPECIFICATIONS

Media handling	
Maximum printing width	65 in (165 cm)
Maximum image width	64 in (162.6 cm) full-bleed printing
Maximum media thickness	2 in (5.08 cm)
Four-zone, user-selectable vacuum system	
Maximum rigid and roll media weight:	100 lb (45.4 kg)
Maximum roll diameter:	9 in (22.9 cm)
Modular table design for scalable rigid printing depth	

Productivity	
Express - 1 pass	1,391 ft ² /hr (129 m ² /hr)
Distant - 2 pass	865 ft ² /hr (80 m ² /hr)
Outdoor - 4 pass	455 ft ² /hr (42 m ² /hr)
Production - 6 pass	317 ft ² /hr (29 m ² /hr)
POP - 8 pass	238 ft ² /hr (22 m ² /hr)
High Quality - 12 pass	158 ft ² /hr (15 m ² /hr)
Ultra Quality - 16 pass	120 ft ² /hr (11 m ² /hr)

Environmental conditions	
Compressed air:	Not required
Operating temperature:	65 °F to 80 °F (18 °C to 27 °C)
Humidity:	40% to 80% (non-condensing)
Dimensions (H x W x L) with one set of tables:	137 in (348 cm) x 95 in (241 cm) x 64 in (163 cm)
Weight:	2,722 lb (1,235 kg), including tables and rollers 1,965 lb without peripherals
Electrical:	208-240 VAC, single phase, 50/60 Hz, 30 Amps
Formats	
All popular desktop files formats, including PostScript® 3™, EPS, TIFF, PDF, and RGB/CMYK	



ARROW DIGITAL PVT. LTD.

1005-1006, Aditya - 10th Floor, Opp. Sardar Patel Seva Samaj, Off. C G Road, Mithakhali, Navrangpura, Ahmedabad - 380006. Gujarat - India.

Tel.: +91 79 26404017 / 18, +91 79 26405048 / 49

Demo Center - Ahmedabad

Branches : Ahmedabad, Bengaluru, Delhi, Indore, Kolkata, Mumbai, Pune, Surat



www.arrow-digital.com

sales@arrow-digital.com