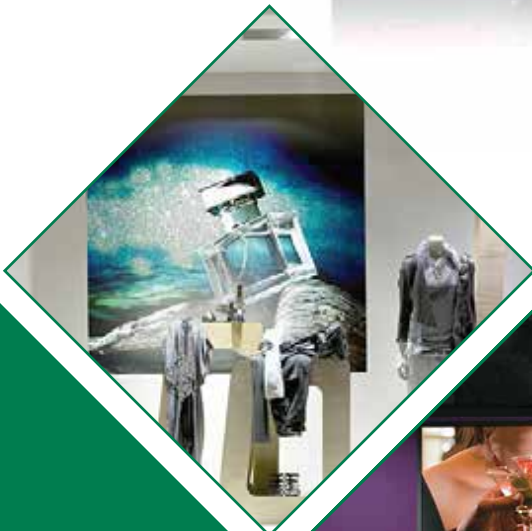


Step up to a **superwide** world of opportunities

VUTEk M3h

Superwide hybrid inkjet printer



Making the move to higher-volume, production-level printing is a significant step, filled with both promise and the unknown. With the EFI™ VUTEk® M3h hybrid flatbed/roll-fed LED printer you're not just upgrading your capabilities, you're stepping into a superwide world of opportunities. Higher volumes, lower costs, and faster turnaround times are just the beginning.

In the fast-paced world of superwide printing, versatility is key. The VUTEk M3h printer is a true hybrid UV LED platform that handles a diverse range of rigid and flexible substrates and applications. From traditional materials to unique and specialty media, this printer allows you to explore new markets and differentiate your offering without compromising quality or performance.



High quality imaging at production-level speeds

- CMYK plus white comes standard
- Optional clear ink* and CMYK-only model
- Add clear ink* without compromising productivity or density of white ink channels
- Resolution up to 2400 dpi
- 7pL / 14pL grayscale printing
- EFI best-in-class white ink in opacity and color gradient
- Magnetic linear drive, state of the art control systems, and high-speed ink jetting ensure precise dot placement for sharper images
- Production to POP quality printing up to 40 boards per hour
- Continuous print plus multi-queue for multi-job printing:
 - Unique continuous media loading detects the next board loaded while auto managing files in the job queue
 - Allows two-up printing without loading two boards at the same time



Ease of use meets advanced print capabilities

User-friendly features and advanced print capabilities further enhance the functionality of the VUTEk M3h printer, so you can print more jobs with ease and precision.

- Automated, user-selectable, six-zone vacuum system for strong media hold down, lower power consumption, and reduced operational noise
 - Table is divided into six different user-selectable zones; three zones on each side to support two-up printing
 - Operator defines vacuum strength in each zone and can save settings for future use
- Anti-static bar across the width of the platen for efficient removal of static electricity
- Media scan function to locate placement with automated media height detection
- Dual-directional carriage collision detection system alerts operator when wrinkles or other defects are detected
- Automated head cleaning
- White ink and multilayer printing in any color up to five layers in a single pass for more high-value applications
- Clear ink* to enhance an entire image (full flood) or selected areas (spot) to add extra pop to colors or special effects to graphics – printed in line with the other colors

* Clear ink is in development and coming soon.

EFI's market leading green LED technology



In today's world, economics and environmental responsibility go hand in hand. EFI's industry-leading LED technology offers not only lower operational costs but also reduced environmental impact. This means you can increase profits with more premium-margin jobs while making sustainability a core part of your business strategy.

- Extends your range of supported substrates to include thinner/lower cost and heat-sensitive specialty media
- Increases uptime and productivity with instant on/off lamps and less maintenance
- Drives down operating costs with less energy consumption and fewer consumables
- Reduces media and ink waste with consistent color and simple operation
- Offers a greener print solution with low VOC inks, lower power consumption, and less waste and consumables

Next generation Genuine EFI LED Inks

EFI VUTEK M3h LED inks are custom formulated, tested, and optimized for the EFI VUTEk M3h printer. And they are manufactured in our state-of-the-art facilities in Michigan, US and Bradford, UK for the quality and performance you'd expect from Genuine EFI Inks – so you always print with flying colors.

- Excellent open time eliminates the need to purge or wipe printheads between jobs
- Reliable jetting performance maximizes uptime and reliability
- Excellent adhesion, elongation, and water resistance
- Environmentally friendly; do not contain heavy metals, virtually no VOC emissions, TPO- and THFA-free, and formulated to meet future EU regulations

Driven by Fiery – the **world leader** in digital inkjet color printing



Fiery® digital front ends provide outstanding image and color quality with features to make print results truly exceptional. The high-performance Fiery server contains:

- Fiery XF server software for Windows including:
 - Spot Color support
 - FAST RIP
 - Cut Marks option
 - Color Profiler option
 - Color Verifier option
 - File Export option
 - Printer Option EFI
- Unlimited macOS® or Windows installations of Fiery Command WorkStation® with up to 10 concurrent connections
- EFI ES-3000 spectrophotometer
- One-year Fiery proServer hardware and Fiery XF software warranty

TECHNICAL SPECIFICATIONS

| MEDIA/HANDLING | |
|--|--|
| HANDLES FLEXIBLE AND RIGID SUBSTRATES UP TO 126 IN (3.2 M) WIDE AND UP TO 2 IN (5.08 CM) THICK | |
| Maximum sheet weight | 200 lb (90.7 kg) |
| Maximum roll weight | Single roll: 440 lb (200 kg) |
| Maximum roll outer diameter | Single roll: 12 in (30.5 cm) |
| ENVIRONMENTAL CONSIDERATIONS | |
| Fully enclosed design for operator safety and to keep dust and debris out of the carriage area | |
| Compressed air | <ul style="list-style-type: none"> • Air source: 0.6 Mpa, flow rate 100 L/min • Clean and dry air • Instrument quality air required. • Point of use, multi-stage compressed air filtration unit recommended (not included) |
| Ambient room temperature | 68° F – 86° F (20° C – 30° C) |
| Relative humidity (non-condensing) | 40% – 80% |
| Machine weight | 10,141 bs. (4600 kg) |
| Printer dimensions uncrated (W x D x H) | 227.2 in x 74 in x 90.55 in (5770 mm x 1880 mm x 2300 mm) |
| Electrical | <ul style="list-style-type: none"> • Power, AC 220V +/-10% @40A; single phase (N America/Europe) • Power, absolute min/max: 12.3 kw/15 kw • Average power consumption: 3.8 kWh • Frequency: 50 / 60 Hz • Wiring: 3 wire (single phase + Earth Ground) |



1005-1006, Aditya - 10th Floor, Opp. Sardar Patel Seva Samaj, Off. C G Road, Mithakhali,
Navrangpura, Ahmedabad - 380006. Gujarat - India.
Tel.: +91 79 26404017 / 18, +91 79 26405048 / 49
Demo Center - Ahmedabad
Branches : Ahmedabad, Bengaluru, Delhi, Indore, Kolkata, Mumbai, Pune, Surat



www.arrow-digital.com

sales@arrow-digital.com